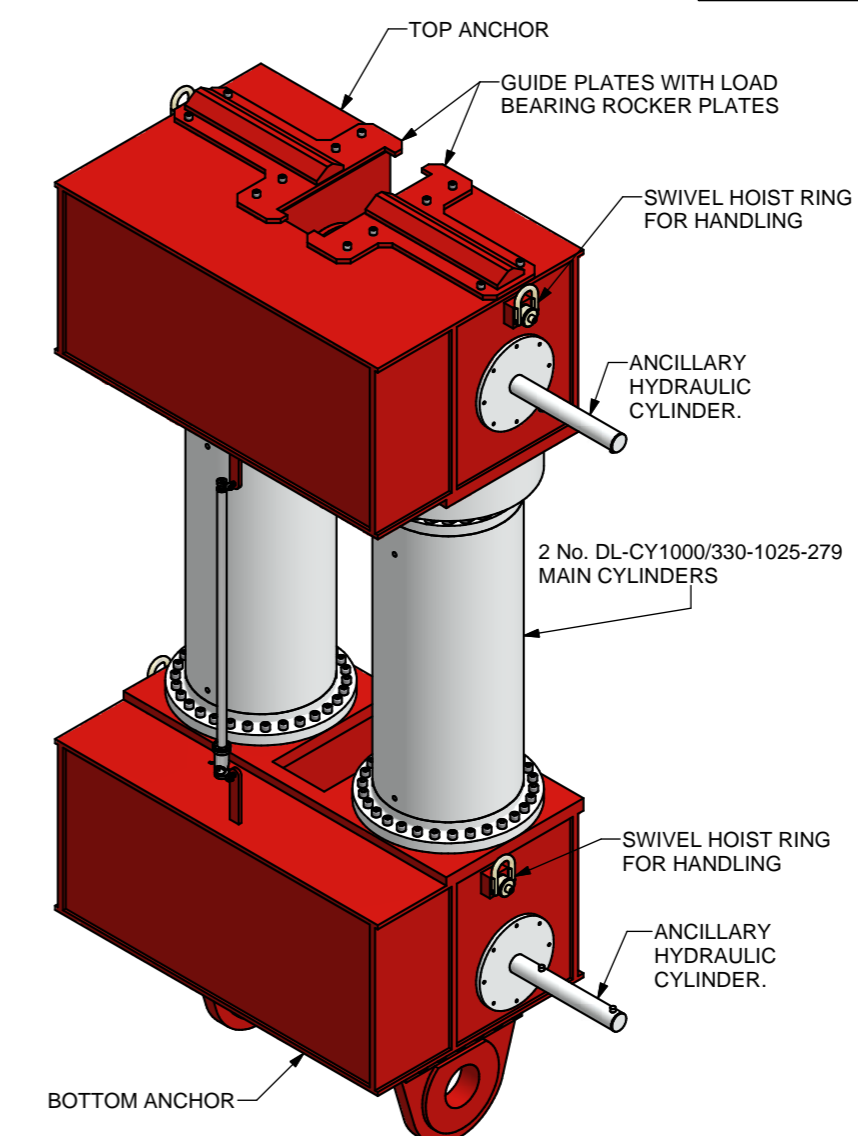
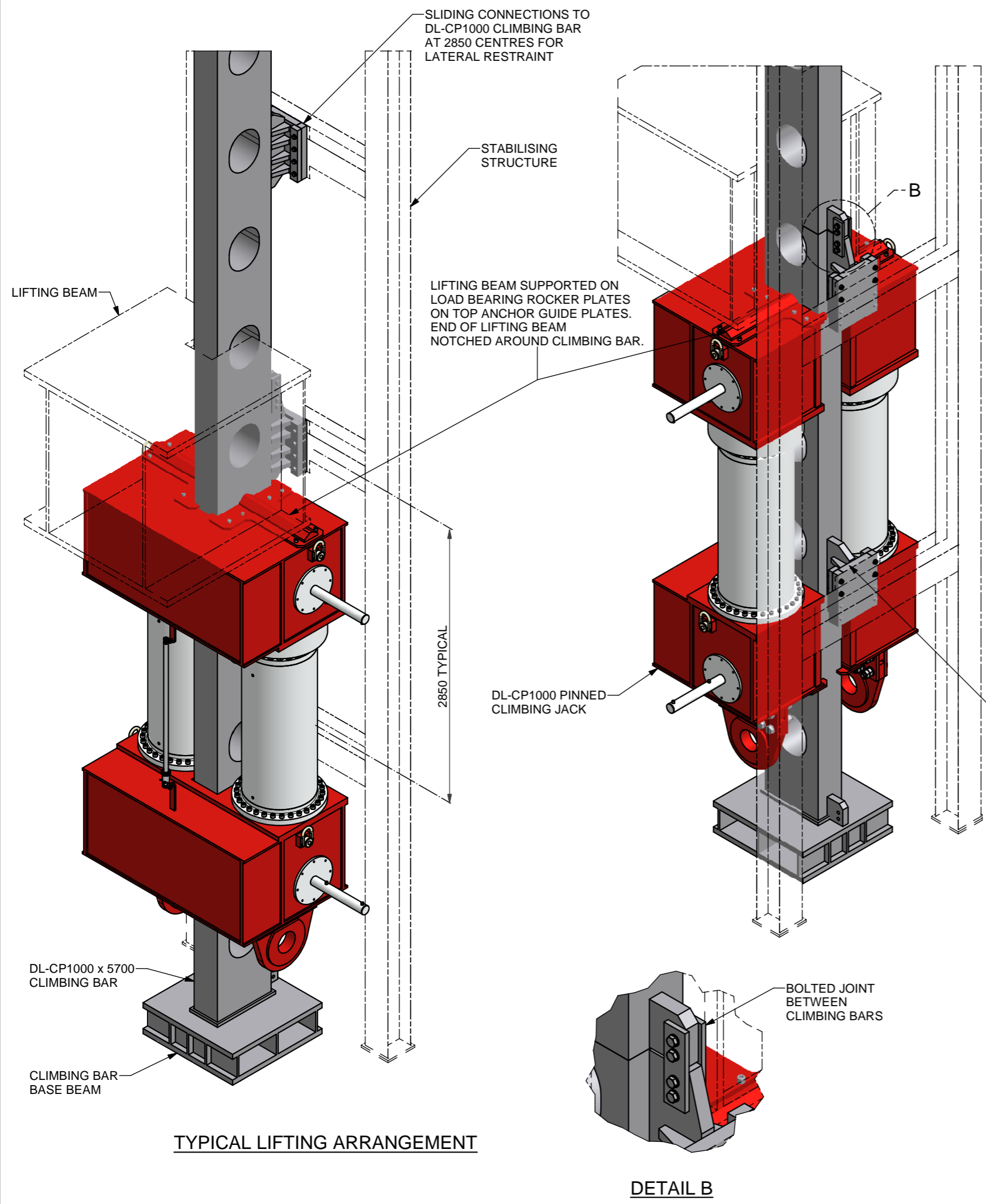
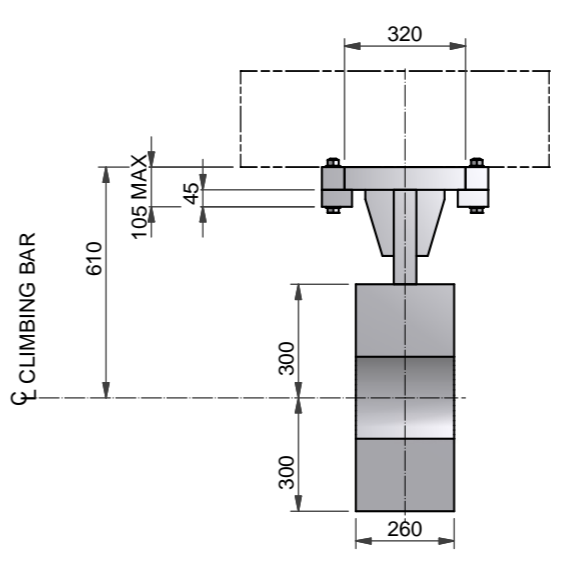


DO NOT SCALE

This drawing has been produced by Dorman Long Technology in accordance with the instructions of the client for their sole and specific use.
 Dorman Long Technology shall not be liable for the use of any information contained on this drawing for any purpose other than that for which it was specifically prepared and provided.
 Should there be any doubt regarding the interpretation of any information given on this drawing, enquiries should be directed to Dorman Long Technology at the address given below before executing such part of the works.
 Copyright © Dorman Long Technology



DL-CP1000 PINNED CLIMBING JACK



**DETAIL A
CLIMBING BAR LATERAL RESTRAINT DETAIL
(1 : 20)**

NOTES

SPECIFICATION

DL-CP1000 PINNED CLIMBING JACK	
SAFE WORKING LOAD (SWL) (PUSH / PULL)	1000 / 660 METRIC TONNES
JACK TEST LOAD (1.25 X SWL) (PUSH / PULL)	1250 / 825 METRIC TONNES
CLOSED LENGTH (PIN CENTRES)	2815 mm
OVERALL CLOSED LENGTH	3805 mm
STROKE	1025 mm
OPERATING TEMPERATURE	-20 to +40 °C
MAX FULLY EQUIPPED JACK WEIGHT	15300 kg.
DL-CY500/330-1025-279 MAIN CYLINDER (2 No. PER CLIMBING JACK)	
SAFE WORKING LOAD (SWL) (PUSH / PULL)	500 / 330 METRIC TONNES
WORKING PRESSURE (PUSH / PULL)	279 BAR
SEALING TEST PRESSURE (1.5 x WORKING PRESSURE) (PUSH / PULL AT END OF STROKE)	418.5 BAR
CYLINDER CLOSED LENGTH	1675 mm
STROKE	1025 mm
OPERATING TEMPERATURE	-20 to +40 °C
MAIN CYLINDER WEIGHT	3215 kg
DL-CP1000 x 5700 CLIMBING BAR	
SAFE WORKING LOAD (SWL) (COMPRESSION)	1000 METRIC TONNES
OVERALL LENGTH (EACH)	5700 mm
OPERATING TEMP	-20 to +45 °C
WEIGHT (EACH)	6095 kg

Dorman Long Technology
 The Charles Parker Building,
 Midland Road, Higham Ferrers,
 Northamptonshire, NN10 8DN
 United Kingdom
 Tel: +44 (0) 1933 319133
 Fax: +44 (0) 1933 319135
 www.dormanlongtechnology.com

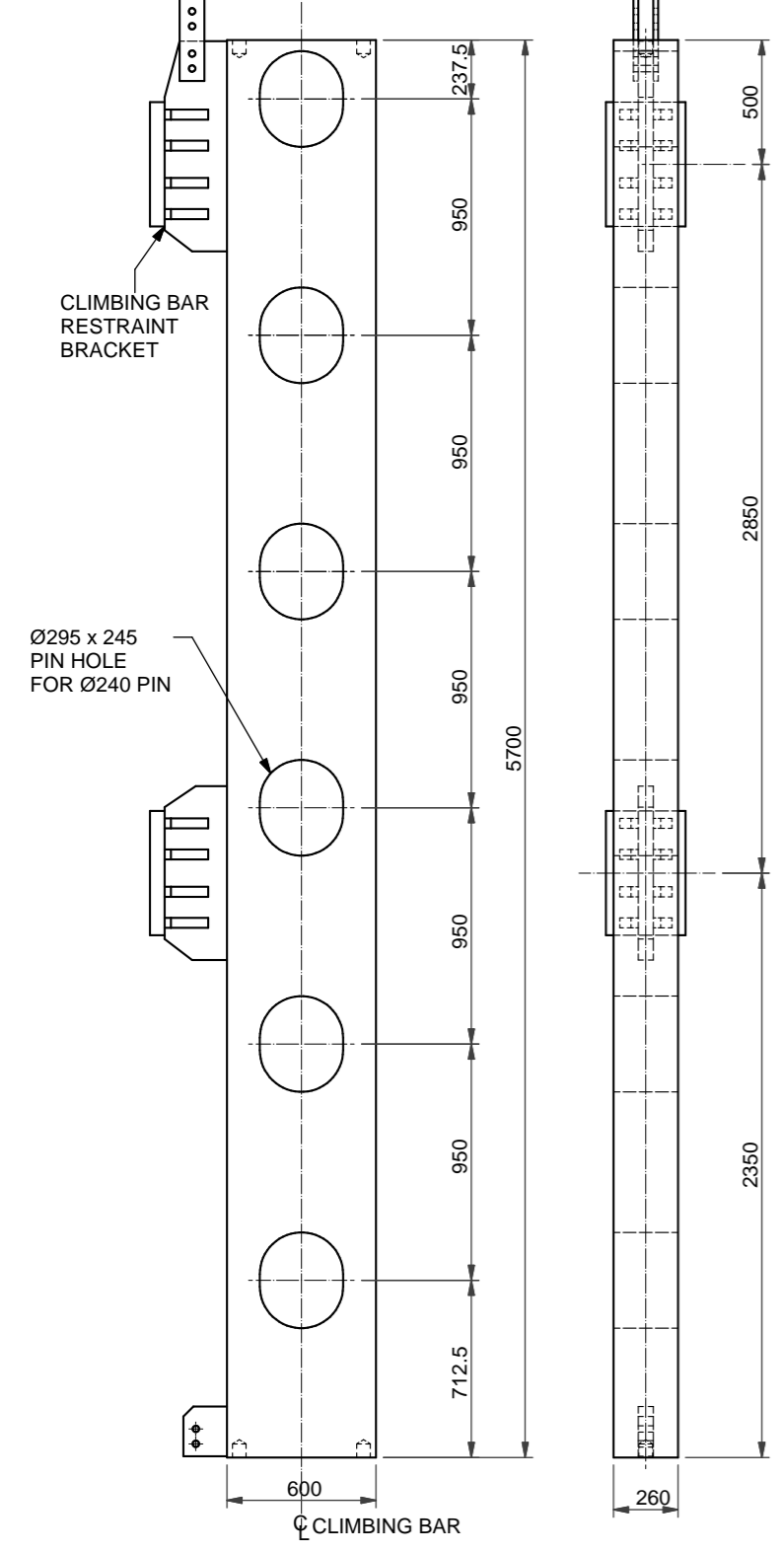
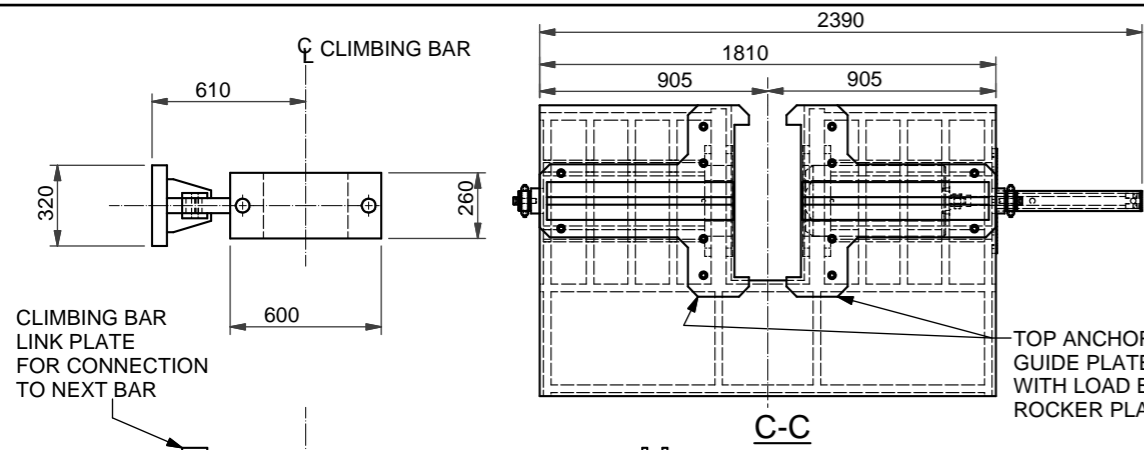
Project
DL-CP1000 PINNED CLIMBING JACK SYSTEM

Drawing Title
**DL-CP1000 PINNED CLIMBING JACK
 DL-CP1000 x 5700 CLIMBING BAR
 GENERAL ARRANGEMENT**

	Design Eng: JM	Checking Eng: SAB
	Drawn by: SG	Project Eng: SAB

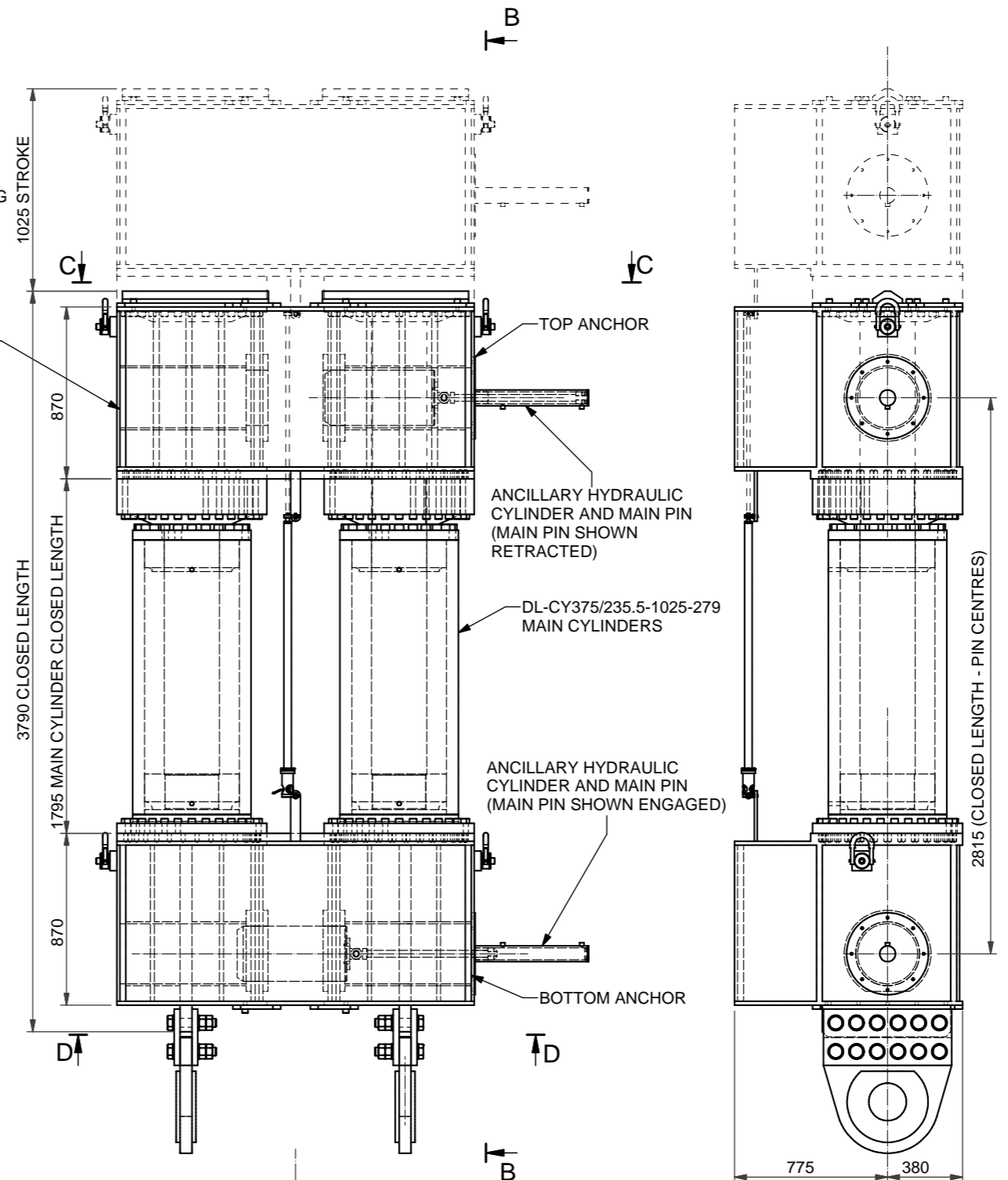
Scales (At A3) AS SHOWN
 Drawing Status
INFORMATION

Original Drawing size: A3
 Drawing No. **DL-CP1000-010-01** Rev. **A**



DL-CP1000 x 5700 CLIMBING BAR
(1:30)

FIXING FOR MOUNTING ANCILLARY HYDRAULIC CYLINDER ON EITHER SIDE OF JACK TO SUIT SITE CONDITIONS



DL-CP1000 PINNED CLIMBING JACK
(1:30)

DO NOT SCALE

This drawing has been produced by Dorman Long Technology in accordance with the instructions of the client for their sole and specific use.
Dorman Long Technology shall not be liable for the use of any information contained on this drawing for any purpose other than that for which it was specifically prepared and provided.
Should there be any doubt regarding the interpretation of any information given on this drawing, enquiries should be directed to Dorman Long Technology at the address given below before executing such part of the works.

Copyright © Dorman Long Technology

NOTES

SPECIFICATION

DL-CP1000 PINNED CLIMBING JACK	
SAFE WORKING LOAD (SWL) (PUSH / PULL)	1000 / 660 METRIC TONNES
JACK TEST LOAD (1.25 X SWL) (PUSH / PULL)	1250 / 825 METRIC TONNES
CLOSED LENGTH (PIN CENTRES)	2815 mm
OVERALL CLOSED LENGTH	3805 mm
STROKE	1025 mm
OPERATING TEMPERATURE	-20 to +40 °C
MAX FULLY EQUIPPED JACK WEIGHT	15300 kg.
DL-CY500/330-1025-279 MAIN CYLINDER (2 No. PER CLIMBING JACK)	
SAFE WORKING LOAD (SWL) (PUSH / PULL)	500 / 330 METRIC TONNES
WORKING PRESSURE (PUSH / PULL)	279 BAR
SEALING TEST PRESSURE (1.5 x WORKING PRESSURE) (PUSH / PULL AT END OF STROKE)	418.5 BAR
CYLINDER CLOSED LENGTH	1675 mm
STROKE	1025 mm
OPERATING TEMPERATURE	-20 to +40 °C
MAIN CYLINDER WEIGHT	3215 kg
DL-CP1000 x 5700 CLIMBING BAR	
SAFE WORKING LOAD (SWL) (COMPRESSION)	1000 METRIC TONNES
OVERALL LENGTH (EACH)	5700 mm
OPERATING TEMP	-20 to +45 °C
WEIGHT (EACH)	6095 kg

Dorman Long Technology
The Charles Parker Building,
Midland Road, Higham Ferrers,
Northamptonshire, NN10 8DN
United Kingdom
Tel: +44 (0) 1933 319133
Fax: +44 (0) 1933 319135
www.dormanlongtechnology.com

Project
DL-CP1000 PINNED CLIMBING JACK SYSTEM

Drawing Title
**DL-CP1000 PINNED CLIMBING JACK
DL-CP1000 x 5700 CLIMBING BAR
GENERAL ARRANGEMENT**

	Design Eng: JM	Checking Eng: SAB
	Drawn by: SG	Project Eng: SAB

Scales (At A3) AS SHOWN
Original Drawing size: A3
INFORMATION

Drawing No. DL-CP1000-010-02	Rev. A
--	------------------